

J. BOCZEK\* - G. NUZZACI\*\*

## A new genus and five new species of eriophyid mites (Acari: Eriophyoidea)

### ABSTRACT

*Apontella*, a new genus belonging to Eriophyidae, Nothopodinae related to *Disella* Newkirk and Keifer as well as five new species of the same family are described and illustrated. *Apontella bravaisiae* n. sp. is vagrant on leaves of *Bravaisia integerrima* (Acanthaceae); *Aceria pitbecolobi* n. sp. was found in erineum of *Pitbecolobium dulcae* (Fabaceae) and *Aceria maracai* n. sp. was found causing galls on lower leaf surface of *Pluchea odorata* (Compositae). The above species were collected in Maracay, Aragua, Venezuela. *Aceria ruelliae* Channabasavanna, described from South India in whitish erineum on *Ruellia patula*, was collected, in the same locality in Venezuela, in erineum on *Ruellia tuberosa* (Acanthaceae). *Aceria echinopsi* n. sp., was found in Africa (in Libya) causing galls on leaves of *Echinops* sp. (Compositae) and *Aceria saturejae* n. sp. was found in Italy causing flower deformation on *Satureja graeca*.

### INTRODUCTION

A new genus and five new species are described and illustrated by S.E.M. micrographs and light microscopic drawings.

Type materials are deposited at Department of Applied Entomology SGGW, Warszawa, Poland and Istituto di Entomologia Agraria Bari, Italy.

### Designations on Plates

- AP - Internal female genital structures
- Da - Anterior dorsum
- CS - Lateral view of opisthosoma's end
- F - Featherclaw (empodium)
- GF - Coxae and female genitalia
- LI - Foreleg
- SA - Anterior side view of mite

---

\* Department of Applied Entomology SGGW, Warszawa

\*\* Istituto di Entomologia Agraria dell'Università di Bari

Ricerca parzialmente finanziaria col contributo M.P.I. 40%, 1987.

### **Apontella** n. gen.

Generic description: Nothopodine mite with fusiform, tapering body. Rostrum short projecting down. Shield subtriangular in anterior outline, with very short lobe over rostrum, rounded posteriorly with median longitudinal and submedian lines. Dorsal tubercles set well ahead of rear shield margin and directing setae up and postero-laterally, diverging. Forecoxae fused, not forming distinct sternum, with two pairs of setae. Forefemoral setae absent, tibia but slightly indicated on lateral side of legs; no foretibial setae. Opisthosoma dorsally forming a central longitudinal furrow and two sublateral ridges, with slight ventral increase in ring number, with all standard setae present. Female genital coverflap with transverse curved lines. Internal genital apodeme of moderate length. The genus is named for Dr. Orlando Aponte, Instituto de Zoolo-gia Agricola, UCV, Maracay, Aragua, Venezuela who sent us the Venezuelan species.

This new genus is close to *Disella* Newkirk and Keifer, 1975, but it can be distinguished by the presence of dorsal furrow, two ridges and the first forecoxal setae, diverging dorsal setae and the absence of forefemoral setae. All known *Disella* species have opisthosomal rings evenly arched.

Genotype: *Apontella bravaisiae* n. sp.

### **Apontella bravaisiae** n. sp. (plates 1-2)

*Female* - 165  $\mu\text{m}$  long (range of 10 specimens 135 - 172  $\mu\text{m}$ ); 59  $\mu\text{m}$  wide, 40  $\mu\text{m}$  thick; fusiform, slightly flattened. Rostrum 20  $\mu\text{m}$  long; rostral setae 2  $\mu\text{m}$  long; chelicerae 18  $\mu\text{m}$  long; dorsal shield 47 (43-49)  $\mu\text{m}$  long with lobe over rostrum 2  $\mu\text{m}$  long, with obscure median, and admedian longitudinal lines. Dorsal tubercles 17  $\mu\text{m}$  ahead of rear shield margin, situated laterally, 25  $\mu\text{m}$  apart, with dorsal setae 5  $\mu\text{m}$  long, directed up, slightly laterally and diverging. Foreleg 28  $\mu\text{m}$  long; forefemur 11  $\mu\text{m}$  long without setae, genu 2  $\mu\text{m}$  long, tibiotarsus 9  $\mu\text{m}$  long; claw (solenidium) 4  $\mu\text{m}$  long, unknobbed; feather-claw (empodium) 5  $\mu\text{m}$  long, 5-rayed. Hindleg 24  $\mu\text{m}$  long; tibiotarsus 8  $\mu\text{m}$  long; claw (solenidium) 10  $\mu\text{m}$  long, unknobbed; featherclaw (empodium) 5  $\mu\text{m}$  long. Coxae with some ornamentation of granules; first forecoxal tubercles 11  $\mu\text{m}$  apart; setae 4  $\mu\text{m}$  long; second forecoxal tubercles 8  $\mu\text{m}$  apart; 25  $\mu\text{m}$  long. Hindcoxal tubercles 26  $\mu\text{m}$  apart; setae 22  $\mu\text{m}$  long; sternum 5  $\mu\text{m}$  long. Opisthosoma with 28 broad tergites and about 45 sternites. Tergites with very undistinct elongated microtubercles touching rear margins of tergites. Sternites with elongated more distinct microtubercles. Lateral setae 30  $\mu\text{m}$

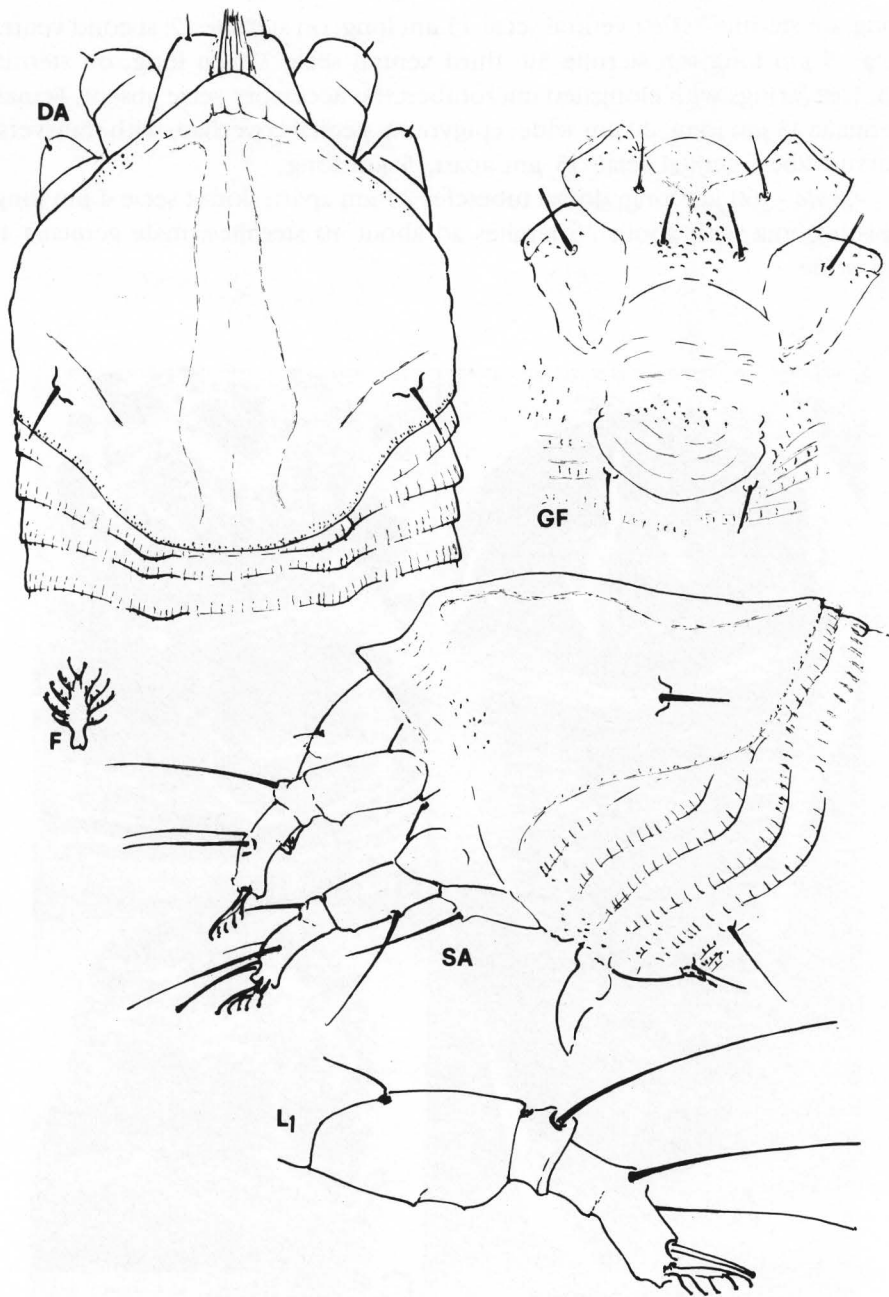


Plate 1 - *Apontella bravaisiae* n. sp.

long, on sternite 7; first ventral setae  $45\ \mu\text{m}$  long, on sternite 17; second ventral setae  $5\ \mu\text{m}$  long, on sternite 30; third ventral setae  $37\ \mu\text{m}$  long, on sternite 43. Last 5 rings with elongated microtubercles. Accessory setae absent. Female genitalia  $15\ \mu\text{m}$  long,  $20\ \mu\text{m}$  wide; epigynum, genital coverflap, with transverse curved lines; genital setae  $15\ \mu\text{m}$  apart,  $5\ \mu\text{m}$  long.

*Male* -  $160\ \mu\text{m}$  long; dorsal tubercles  $25\ \mu\text{m}$  apart; dorsal setae  $4\ \mu\text{m}$  long; opisthosoma with about 26 tergites ad about 40 sternites; male genitalia  $15\ \mu\text{m}$  wide.

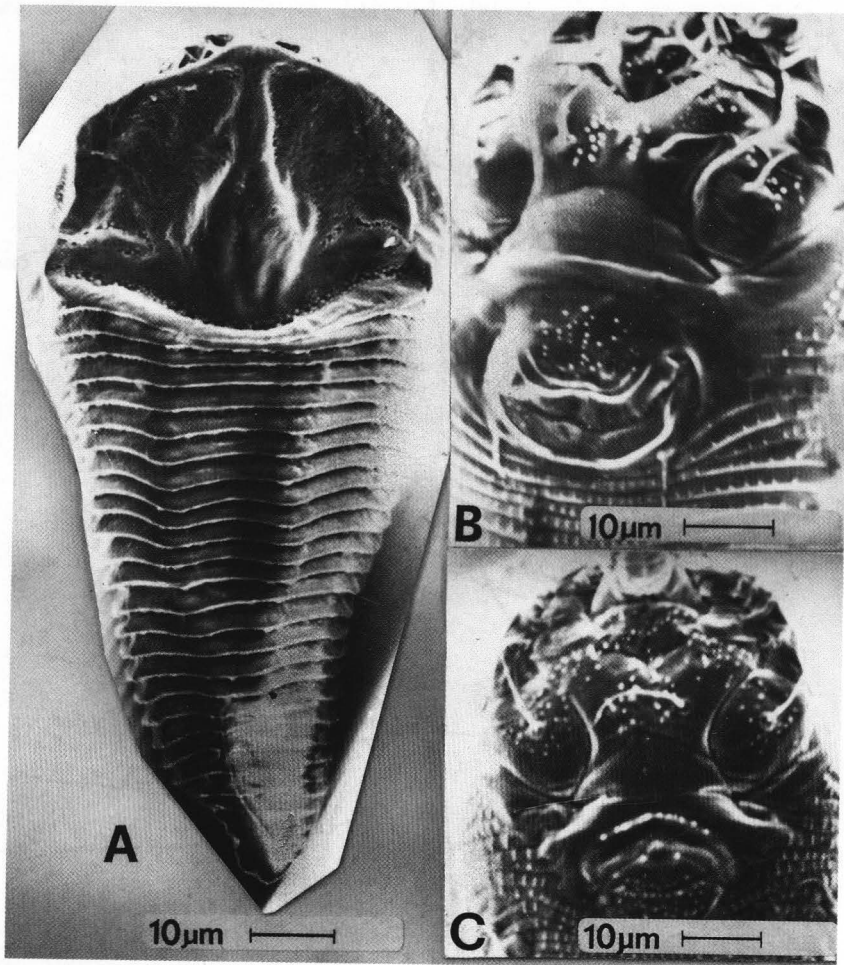


Plate 2 - *Apontella bravaisiae* n. sp.: A, dorsal side of the body; B, female genitalia and coxae; C, male genitalia and coxae.

*Host plant* - *Bravaisia integerrima* (Spreng) Standl. (Acanthaceae)

*Relation to host plant*: vagrant on undersurface of leaves.

*Type material* - Holotype: female on slide, Maracay, Aragua, Venezuela, March 15, 1988, Rosa Mickel. Paratypes (8): females (7) and male (1) on slides, same data as holotype.

*Notes* - This species is characterized by the presence of some granulations on coxae, short diverging dorsal setae, 5-rayed featherclaw. Opisthosoma with about 28 tergites.

### ***Aceria pithecolobi* n. sp. (plates 3-4)**

*Female* - 162  $\mu\text{m}$  long (range of 10 specimens 132-178  $\mu\text{m}$ ); 36  $\mu\text{m}$  wide, 32  $\mu\text{m}$  thick; wormlike. Rostrum 13  $\mu\text{m}$  long; chelicerae 11  $\mu\text{m}$  long. Dorsal shield 30  $\mu\text{m}$  long with very short lobe over rostrum, laterally with granules; with complete median and admedian lines. Dorsal tubercles on rear shield margin; 25  $\mu\text{m}$  apart, with dorsal setae 5  $\mu\text{m}$  long, directed to the rear and diverging. Foreleg 23  $\mu\text{m}$  long; tibia 3  $\mu\text{m}$  long without seta; tarsus 4  $\mu\text{m}$  long; claw (solenidium) 4  $\mu\text{m}$  long unknobbed; featherclaw (empodium) 6  $\mu\text{m}$  long, 5-rayed. Hindleg 21  $\mu\text{m}$  long; tibia 2  $\mu\text{m}$  long; tarsus 4  $\mu\text{m}$  long; claw (solenidium) 7  $\mu\text{m}$  long, unknobbed; featherclaw (empodium) 5  $\mu\text{m}$  long. Coxae with ornamentation of fine granules; first forecoxal tubercles 8  $\mu\text{m}$  apart; setae 5  $\mu\text{m}$  long; second forecoxal tubercles 8  $\mu\text{m}$  apart; setae 15  $\mu\text{m}$  long. Hindcoxal tubercles 20  $\mu\text{m}$  apart; setae 23  $\mu\text{m}$  long; sternum 8  $\mu\text{m}$  long. Opisthosoma with about 47 microtuberculae tergites and about 60 microtuberculate sternites. Microtubercles elongated. Lateral setae 30  $\mu\text{m}$  long, on sternite 8; first ventral setae 39  $\mu\text{m}$  long, on sternite 20; second ventral setae 50  $\mu\text{m}$  long, on sternite 34; third ventral setae 18  $\mu\text{m}$  long, on sternite 53. Last 5 rings broader. Accessory setae missing. Female genitalia 15  $\mu\text{m}$  long, 21  $\mu\text{m}$  wide; epigynum proximally with granules and distally with 12 longitudinal short striae; genital setae 31  $\mu\text{m}$  apart, 14  $\mu\text{m}$  long.

*Male* - 120  $\mu\text{m}$  long.

*Nymph II* - 142  $\mu\text{m}$  long; shield 27  $\mu\text{m}$  long; chelicerae 11  $\mu\text{m}$  long; dorsal setae 5  $\mu\text{m}$  long. Opisthosoma with about 32 rings; genital setae 11  $\mu\text{m}$  apart.

*Host plant* - *Pithecolobium dulceae* (Roxb.) Benth. (Fabaceae).

*Relation to host plant*: causing erineum on undersurface of leaves.

*Type material* - Holotype: female on slide, Maracay, Aragua, Venezuela, June 15, 1987, J.A. Munoz. Paratypes (9): females (8) and male (1) on slides, same data as holotype.

Notes - This species is close to *Aceria rosas-costae* K., 1952 and can be distinguished by the shield and coverflap pattern, foretibia, microtubercles, length of body and setae. In *A. rosas-costae* shield without median line, coverflap with longitudinal striae, foretibia with seta, body 115-125  $\mu\text{m}$  long, dorsal seta 14  $\mu\text{m}$  long, microtubercles rounded, accessory seta present. In the new species shield with median line, coverflap with granules proximally and striae distally, foretibia and forefemur without setae, body 132-178  $\mu\text{m}$  long, dorsal setae 5  $\mu\text{m}$  long, microtubercles elongated, accessory setae absent.

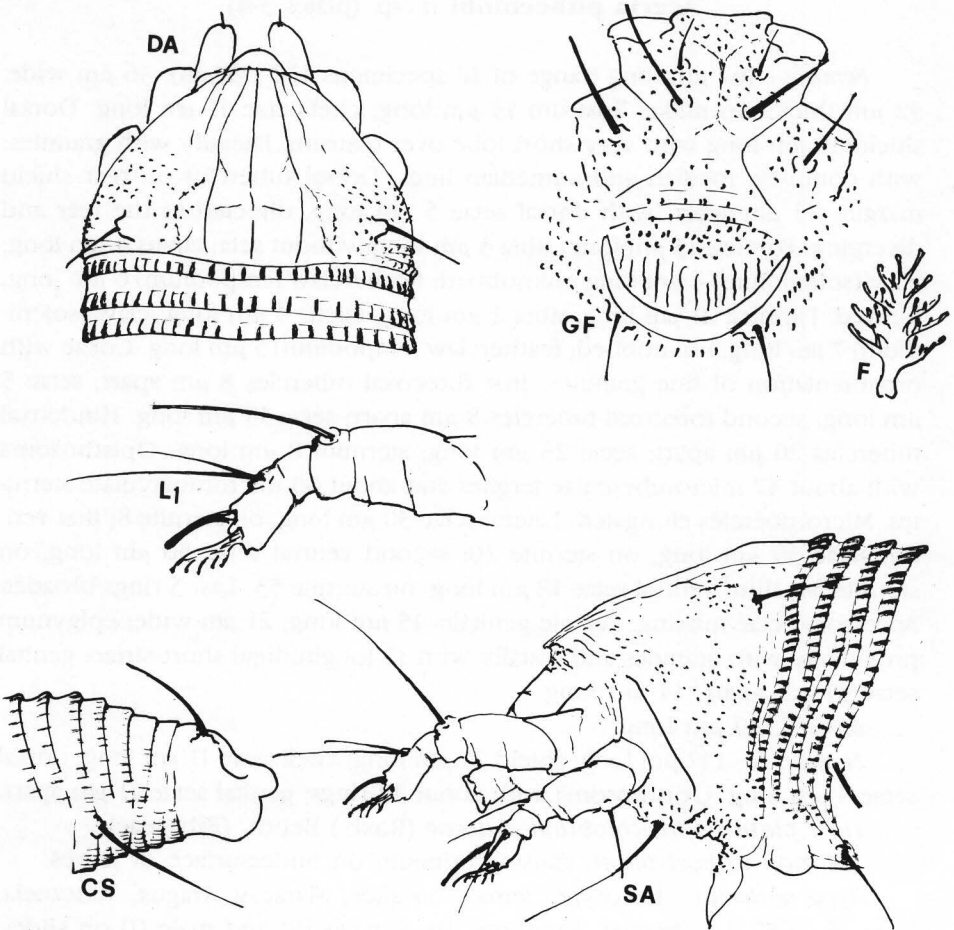


Plate 3 - *Aceria pithecolobi* n. sp.



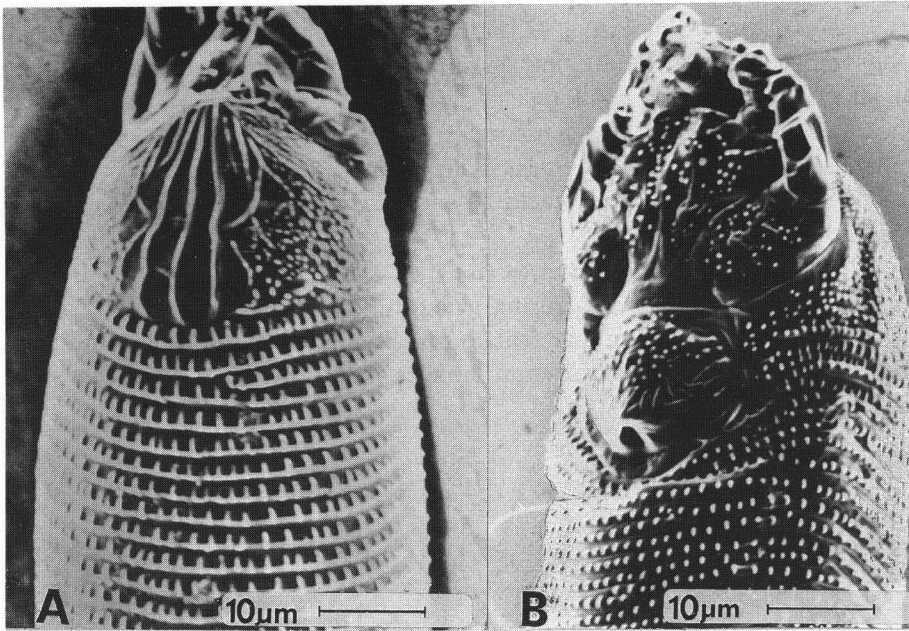


Plate 4 - *Aceria pitbecolobi* n. sp.: A, dorsal view of anterior part of the body; B, latero-ventral view of female.

***Aceria maracai* n. sp. (plates 5-6)**

*Female* - 204  $\mu\text{m}$  long (range of 10 specimens 160-225  $\mu\text{m}$ ); 35  $\mu\text{m}$  wide, 27  $\mu\text{m}$  thick; wormlike. Rostrum 15  $\mu\text{m}$  long; rostral seta 3  $\mu\text{m}$  long; chelicerae 12  $\mu\text{m}$  long. Dorsal shield 15  $\mu\text{m}$  long without lobe over rostrum, with broken median, more distinct admedian and submedian lines; with some granules laterally and close to rear shield margin. Dorsal tubercles on rear shield margin, 17  $\mu\text{m}$  apart, with dorsal setae 25  $\mu\text{m}$  long, directed to the rear and diverging. Foreleg 23  $\mu\text{m}$  long; tibia 3  $\mu\text{m}$  long; without seta; tarsus 6  $\mu\text{m}$  long; claw (solenidium) 5  $\mu\text{m}$  long, unknobbed; featherclaw (empodium) 5  $\mu\text{m}$  long, 4-rayed. Hindleg 20  $\mu\text{m}$  long; tibia 3  $\mu\text{m}$  long; tarsus 5  $\mu\text{m}$  long; claw (solenidium) 7  $\mu\text{m}$  long, unknobbed; featherclaw (empodium) 5  $\mu\text{m}$  long. Coxae with ornamentation of granules; first forecoxal tubercles 7  $\mu\text{m}$  apart; setae 6  $\mu\text{m}$  long; second forecoxal tubercles 8  $\mu\text{m}$  apart; setae 15  $\mu\text{m}$  long. Hindcoxal tubercles 16  $\mu\text{m}$  apart; setae 35  $\mu\text{m}$  long; sternum 5  $\mu\text{m}$  long. Opisthosoma with about 78 microtuberculate rings (74-92). Microtubercles elongated touching rear margin of rings. Lateral setae 15  $\mu\text{m}$  long, on sternite 11; first ventral setae 57  $\mu\text{m}$  long, on sternite 24; second ventral setae 30  $\mu\text{m}$  long, on sternite 43; third ventral

setae 20  $\mu\text{m}$  long, on sternite 72. Last 6 rings broader. Accessory seta 2  $\mu\text{m}$  long. Female genitalia 10  $\mu\text{m}$  long, 14  $\mu\text{m}$  wide; epyginum with granules; genital setae 14  $\mu\text{m}$  apart, 15  $\mu\text{m}$  long.

*Male* - 140  $\mu\text{m}$  long; dorsal tubercles 14  $\mu\text{m}$  apart; dorsal setae 23  $\mu\text{m}$  long; opisthosoma with about 67 rings; male genitalia 15  $\mu\text{m}$  wide.

*Nymph II* - 170  $\mu\text{m}$  long; shield 20  $\mu\text{m}$  long; chelicerae 10  $\mu\text{m}$  long; dorsal setae 20  $\mu\text{m}$  long.

*Host plant* - *Pluchea odorata* (L.) Cass. (Compositae)

*Relation to host plant*: causing galls on lower leaf surface.

*Type material* - Holotype: female on slide, Maracay, Aragua, Venezuela, May 20, 1988, R. Mickel. Paratypes: females (9) and male (1) on slides, same data as holotype.

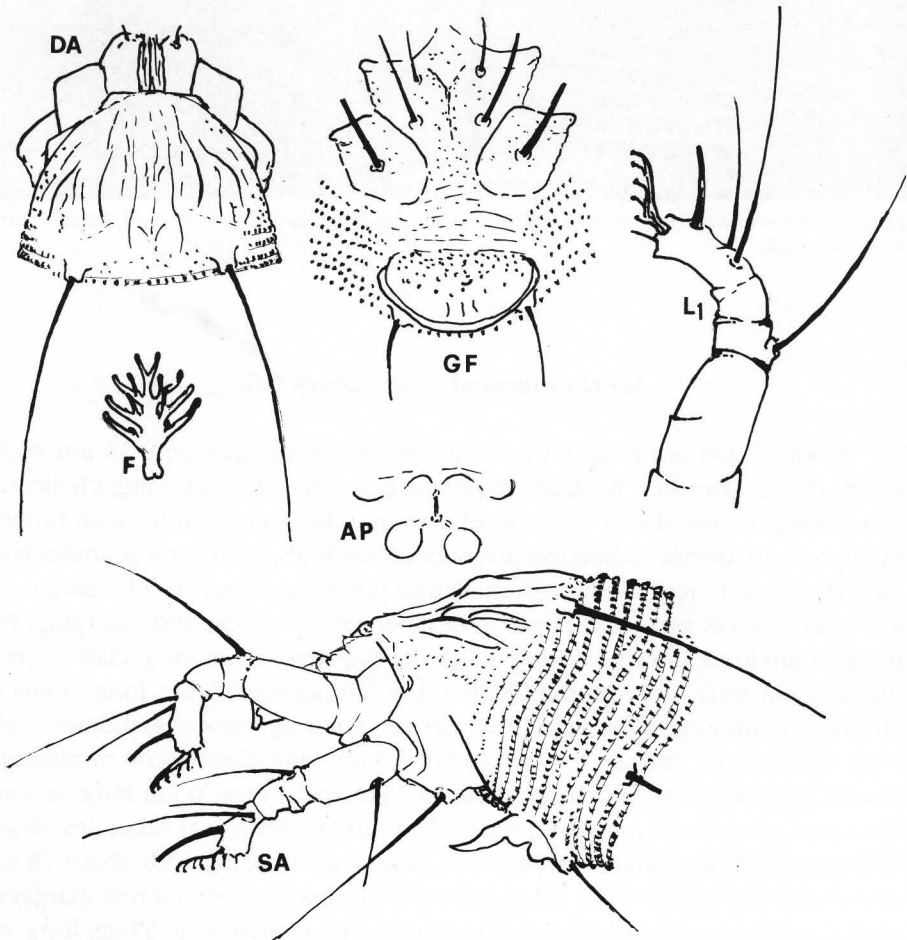


Plate 5 - *Aceria maracai* n. sp.



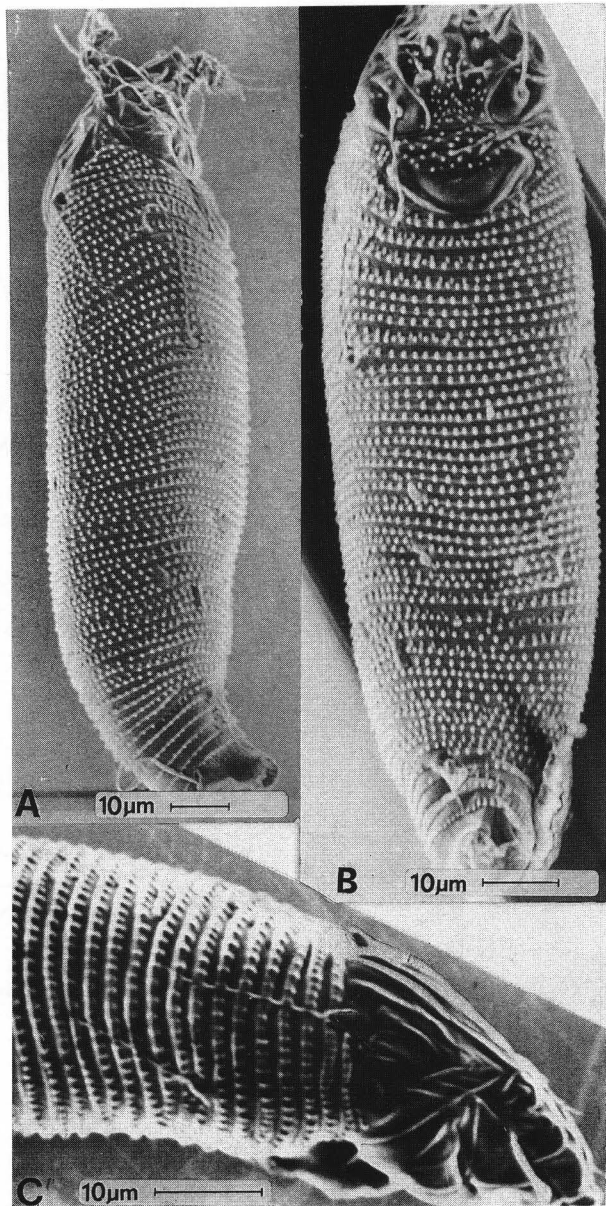


Plate 6 - *Aceria maracai* n. sp.; A, lateral view of female; B, ventral view of female; C, lateral view of anterior part of the body.

**Aceria echinopsi** n. sp. (plates 7-8)

*Female* - 225  $\mu\text{m}$  long (range of 10 specimens 182 - 230  $\mu\text{m}$ ); 50  $\mu\text{m}$  wide, 40  $\mu\text{m}$  thick; wormlike. Rostrum 18  $\mu\text{m}$  long; rostral seta 5  $\mu\text{m}$  long; chelicerae 13  $\mu\text{m}$  long. Dorsal shield 30  $\mu\text{m}$  long (28-32), with 3  $\mu\text{m}$  long lobe over

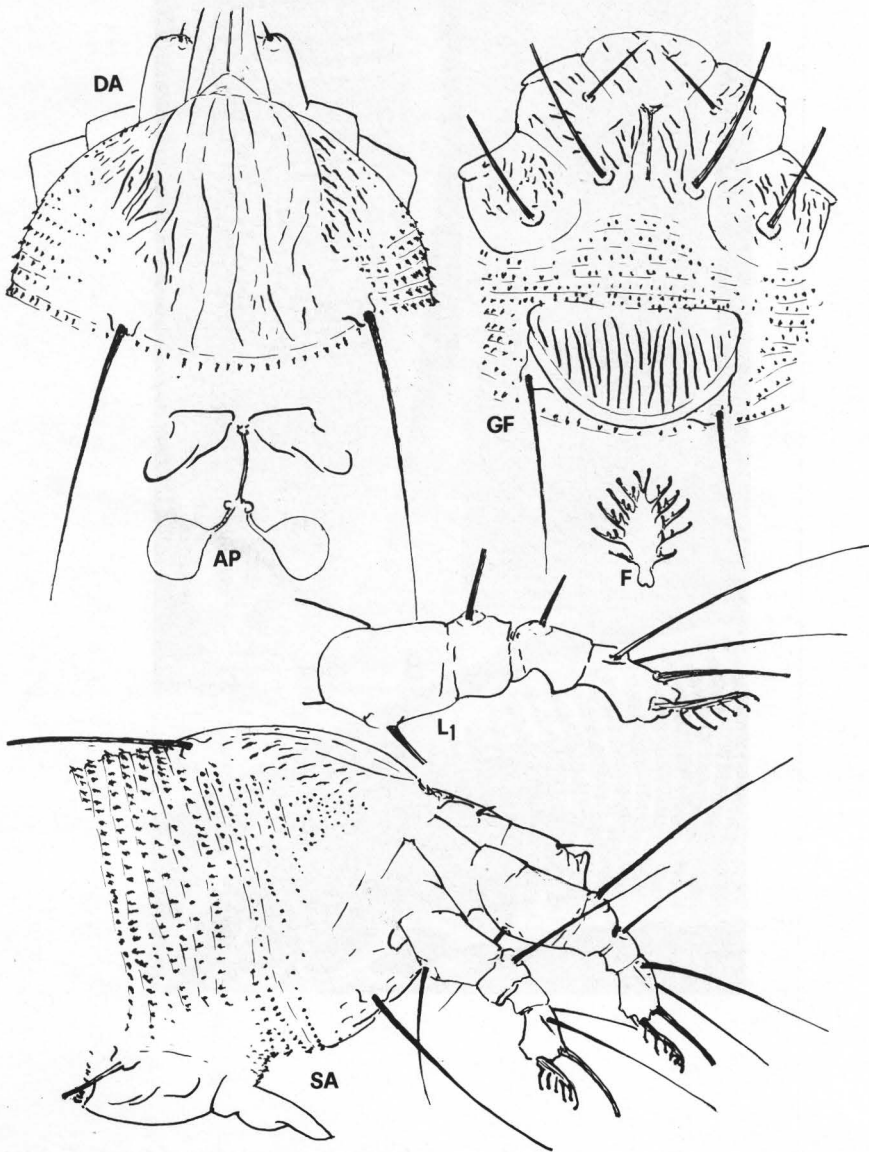


Plate 7 - *Aceria echinopsi* n. sp.

rostrum, with straight median, long admedian and three submedian lines laterally with some fingerlike processes. Dorsal tubercles on rear shield margin;  $26\ \mu\text{m}$  apart, with dorsal setae  $38\ \mu\text{m}$  long, directed up and to the rear, diverging.

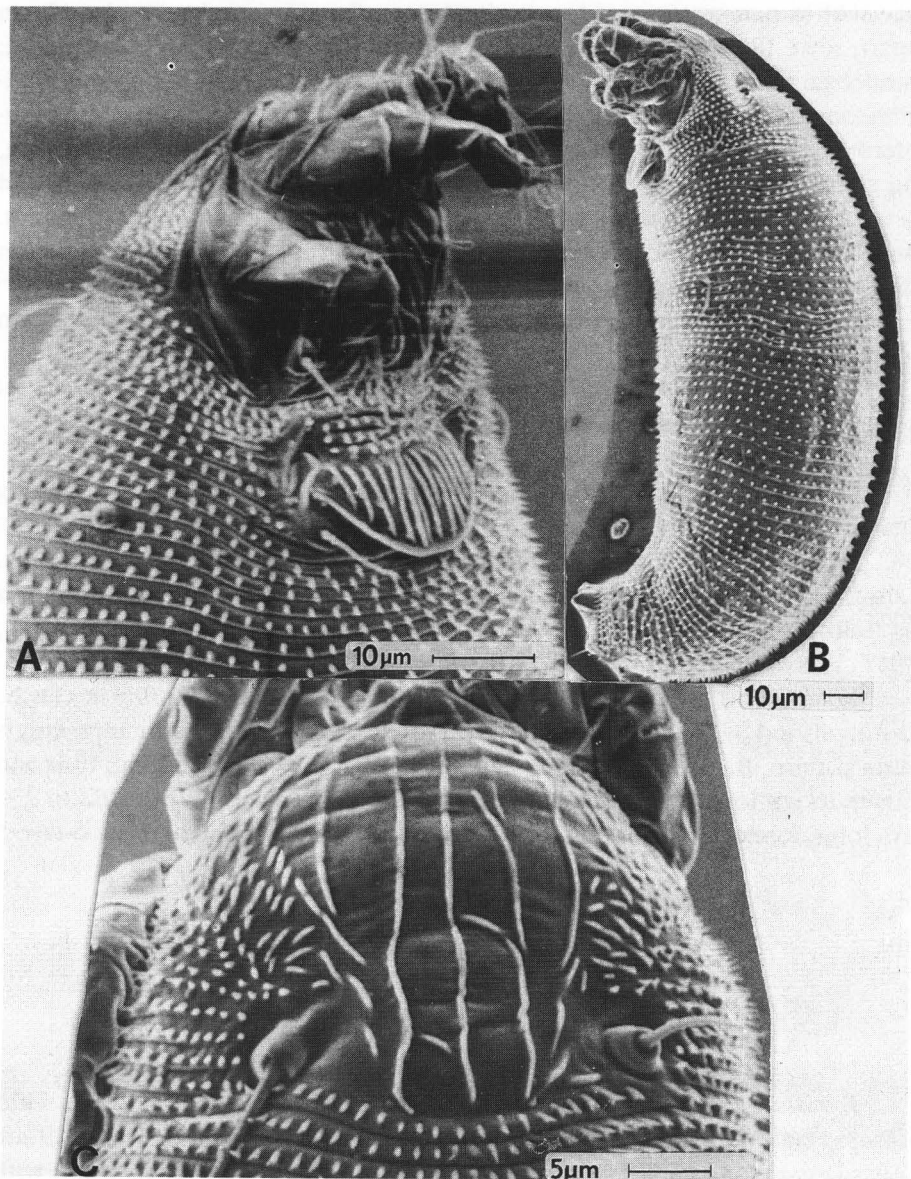


Plate 8 - *Aceria echinopsi* n. sp.: A, latero-ventral view of female anterior part of the body; B, lateral view of female; C, anterior part of the body, dorsally.

Foreleg 26  $\mu\text{m}$  long; tibia 4  $\mu\text{m}$  long; with seta 10  $\mu\text{m}$  long; tarsus 8  $\mu\text{m}$  long; claw (solenidium) 10  $\mu\text{m}$  long, unknobbed; featherclaw (empodium) 8  $\mu\text{m}$  long, 6-rayed. Hindleg 24  $\mu\text{m}$  long; tibia 4  $\mu\text{m}$  long; tarsus 7  $\mu\text{m}$  long; claw (solenidium) 10  $\mu\text{m}$  long, unknobbed; featherclaw (empodium) 8  $\mu\text{m}$  long. Coxae with ornamentation of longitudinal dots; first forecoxal tubercles 15  $\mu\text{m}$  apart; setae 18  $\mu\text{m}$  long; second forecoxal tubercles 10  $\mu\text{m}$  apart; 38  $\mu\text{m}$  long; hindcoxal tubercles 28  $\mu\text{m}$  apart; setae 55  $\mu\text{m}$  long; sternum 5  $\mu\text{m}$  long. Opisthosoma with about 95 (79-97) microtuberculate rings. Microtubercles spinuliferous. Lateral setae 20  $\mu\text{m}$  long, on sternite 16; first ventral setae 45  $\mu\text{m}$  long, on sternite 35; second ventral setae 21  $\mu\text{m}$  long, on sternite 54; third ventral setae 25  $\mu\text{m}$  long, on sternite 89. Last 6 rings with elongated microtubercles. Accessory seta 4  $\mu\text{m}$  long. Female genitalia 13  $\mu\text{m}$  long, 25  $\mu\text{m}$  wide; epigynum with 18-20 striae distally; genital setae 20  $\mu\text{m}$  apart, 20  $\mu\text{m}$  long.

*Male* - 182  $\mu\text{m}$  long; dorsal tubercles 23  $\mu\text{m}$  apart; dorsal setae 32  $\mu\text{m}$  long; opisthosoma with about 75 rings; male genitalia 21  $\mu\text{m}$  wide.

*Nymph II* - 205  $\mu\text{m}$  long; shield 28  $\mu\text{m}$  long; chelicerae 14  $\mu\text{m}$  long; dorsal setae 43  $\mu\text{m}$  long, genital setae 9  $\mu\text{m}$  apart, 11  $\mu\text{m}$  long.

*Host plant* - *Echinops* sp. (Compositae).

*Relation to host plant*: forming subspherical galls, with cells inside, along margin of leaves.

*Type material* - Holotype: female on slide, A Gasr. Bu Tuil near Taruna, Libya, 14, May, 1913. Paratypes: females (8) and males (2) on slides, same data as holotype. Dry material, as well as herbarium (TROTTER A. e CECCONI G., 1917 - *Cecidotheca italica*, vol. XII - fasc. XXI n. 523).

*Notes* - This species is close to *Aceria balasi* Farkas, 1960, but it can be distinguished by the length of body and forelegs, featherclaw structure, epigynum pattern. In *A. balasi* female 240  $\mu\text{m}$  long, forelegs 45  $\mu\text{m}$  long, tibia and tarsus 16  $\mu\text{m}$  long, featherclaw 5-rayed. In the new species female 182 to 230  $\mu\text{m}$  long, forelegs 26  $\mu\text{m}$  long, tibia and tarsus 7  $\mu\text{m}$  long, featherclaw 6-rayed.

### ***Aceria saturejae* n. sp. (plates 9 - 10)**

*Female* - 234  $\mu\text{m}$  long (range of 10 specimens 180-234  $\mu\text{m}$ ); 50  $\mu\text{m}$  wide, 45  $\mu\text{m}$  thick. Rostrum 16  $\mu\text{m}$  long; rostral seta 10  $\mu\text{m}$  long; chelicerae 19  $\mu\text{m}$  long. Dorsal shield 33  $\mu\text{m}$  long, semicircular, without lobe over rostrum, with median, admedian and submedian lines, laterally with dots. Dorsal tubercles on rear shield margin; 28  $\mu\text{m}$  apart, with dorsal setae 52  $\mu\text{m}$  long, directed

to the rear, diverging. Foreleg 54  $\mu\text{m}$  long; tibia 9  $\mu\text{m}$  long; with seta 9  $\mu\text{m}$  long; tarsus 11  $\mu\text{m}$  long; claw (solenidium) 9  $\mu\text{m}$  long, unknobbed; featherclaw (empodium) 8  $\mu\text{m}$  long, 4 - 5 - rayed. Hindleg 45  $\mu\text{m}$  long; tibia 8  $\mu\text{m}$  long;

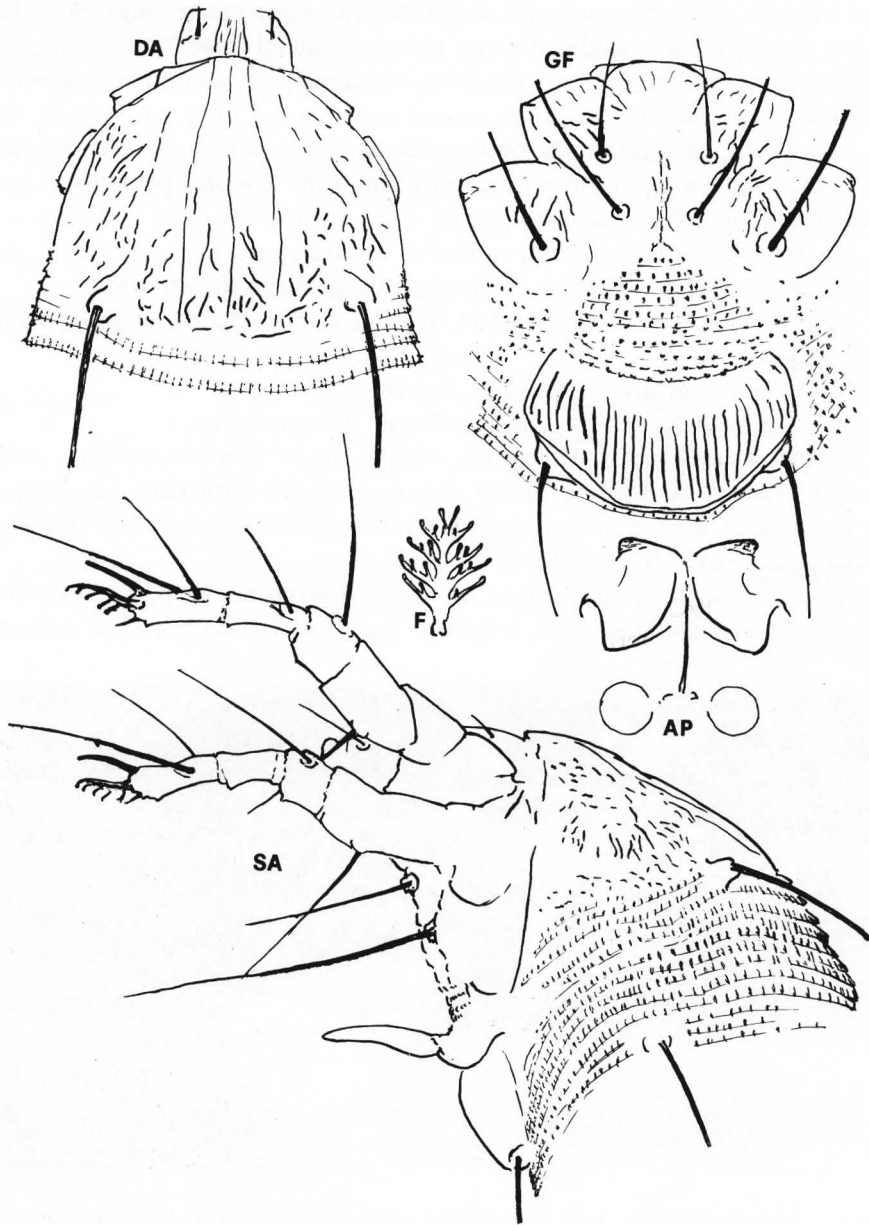


Plate 9 - *Aceria saturejæ* n. sp.



tarsus 10  $\mu\text{m}$  long; claw (solenidium) 9  $\mu\text{m}$  long; featherclaw (empodium) 9  $\mu\text{m}$  long. Coxae with ornamentation of dots; first forecoxal tubercles 15  $\mu\text{m}$  apart; setae 20  $\mu\text{m}$  long; second forecoxal tubercles 10  $\mu\text{m}$  apart; 35  $\mu\text{m}$  long. Hindcoxal tubercles 25  $\mu\text{m}$  apart; setae 70  $\mu\text{m}$  long, forecoxae fused not forming sternum. Opisthosoma with about 92 microtuberculate rings. Microtubercles touching rear margin of rings, pointed. Lateral setae 70  $\mu\text{m}$  long, on sternite 14; first ventral setae 65  $\mu\text{m}$  long, on sternite 33; second ventral setae 35  $\mu\text{m}$  long, on sternite 54; third ventral setae 35  $\mu\text{m}$  long, on sternite 84. Last 8 rings with elongated microtubercles. Accessory seta 5  $\mu\text{m}$  long. Female genitalia 22  $\mu\text{m}$  long, 30  $\mu\text{m}$  wide; epigynum with granules proximally and numerous striae (20-24) distally; genital setae 20  $\mu\text{m}$  apart, 30  $\mu\text{m}$  long.

*Male* - 182  $\mu\text{m}$  long; dorsal tubercles 26  $\mu\text{m}$  apart; dorsal setae 45  $\mu\text{m}$  long; opisthosoma with about 75 rings; male genitalia 21  $\mu\text{m}$  wide.

*Nymph II* - 215  $\mu\text{m}$  long; shield 30  $\mu\text{m}$  long; dorsal setae 31  $\mu\text{m}$  long, chelicerae 15  $\mu\text{m}$  long.

*Host plant* - *Satureja graeca* L. (Labiatae)

*Relation to host plant*: - causing flower deformation.

*Type material* - Holotype on slide, female, Monte Terminio, Avellino, Italy, July 1909. Paratypes: Females (8) and male (1) on slides, same data as holotype. Dry material: as well as herbarium (TROTTER A. e CECCONI G., 1917 - *Cecidotheca italica*, vol. XII, fasc. XXIII n. 564).

*Notes* - This species is close to *Aceria sphacelina* K., 1955, but it can be distinguished by the body size, length of legs, coxae and epigynum pattern.

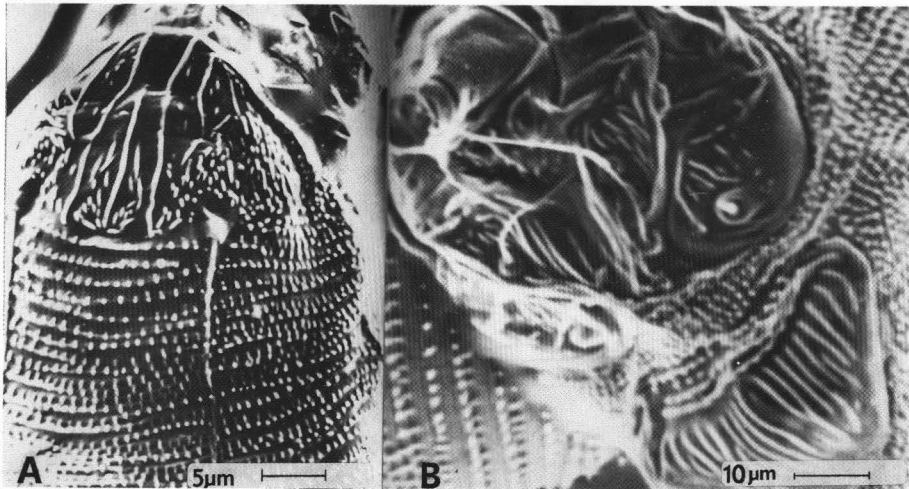


Plate 10 - *Aceria saturejiae* n. sp.: A, anterior part of the body, dorsally; B, female genitalia and coxae.



In *A. sphacelina* females 140-180  $\mu\text{m}$  long, forelegs 27 and hindlegs 23  $\mu\text{m}$  long, coxae slightly marked, epigynum with 10-12 striae. In the new species females 180 to 234  $\mu\text{m}$  long, forelegs 54 and hindlegs 45  $\mu\text{m}$  long, coxae with numerous dots, epigynum with 20-24 striae.

### **Aceria ruelliae** Channabasavanna, 1966

This species was described from Coimbatore, Madras, South India inducing whitish erineum patches on stem and leaf surfaces of tender shoots of *Ruellia patula* (Acanthaceae). In Maracay, Venezuela, the species was causing erineum on lower surfaces of *Ruellia tuberosa* leaves. The mites from Venezuela showed some granules on female coxae.

### **Aceria dorestei** K., 1963

This species as having smooth shields was described from Maracay, Aragua, Venezuela from leaves of *Bravaisia integerrima* (Sprang.) Standl. (Acanthaceae), forming irregular and disfiguring leaf pustules. Mites studied by us, causing edge rolling of the leaves of the same plant, from the same locality, shield with distinct pattern of admedian and submedian lines. Male 138  $\mu\text{m}$  long, dorsal tubercles 14  $\mu\text{m}$  apart, dorsal seta 18  $\mu\text{m}$  long, opisthosoma with about 53 rings, male genitalia 15  $\mu\text{m}$  wide.

#### RIASSUNTO

UN NUOVO GENERE E CINQUE SPECIE NUOVE DI ACARI ERIOFIDI (ACARI: ERIOPHYOIDEA)

Viene descritto un nuovo genere, *Apontella*, affine a *Disella* Newkirk and Keifer (Eriophyi-  
dae, Nothopodinae). Il nuovo genere si distingue da *Disella*, perchè i tergiti presentano un  
solco dorsale delimitato da due rilievi longitudinali. Sono descritte inoltre le seguenti nuove  
specie: tre provenienti da Maracay, Aragua, Venezuela, *Apontella bravaisiae* vagante su foglie  
di *Bravaisia integerrima* (Acanthaceae), *Aceria pitbecolobi* che causa erinosi su *Pitbecolobium*  
*dulceae* (Fabaceae) e *Aceria maracay* in galle su foglie di *Pluchea odorata* (Compositae); una  
proveniente dalla Libia, *Aceria echinopsi* in galle su foglie di *Echinops* sp. (Compositae) e una  
dall'Italia, *Aceria saturejae* in fiori di *Satureja graeca* (Labiatae). *Aceria ruelliae* Channabasa-  
vanna, descritta su *Ruellia patula*, è stata rinvenuta su *Ruellia tuberosa* in Venezuela ed *Aceria*  
*dorestei* K. è stata individuata in arrotondamenti del lembo fogliare di *Bravaisia integerrima*  
(Acanthaceae).

#### REFERENCES

- CHANNABASAVANNA G.P., 1966 - A contribution to the knowledge of Indian eriophyid mites (Eriophyoidea: Trombidiformes: Acarina). Univ. Agric. Sci., Bangalore, India, 154 p.
- FARKAS A., 1960 - Ueber die Eriophyiden (Acarina) Ungarns. I. Beschreibung neuer und wenig bekannter Arten. *Acta Zool. Acad. Sci. Hungar*, 6: 315-339.
- KEIFER H.H., 1952 - Eriophyid Studies XIX. *Bull. Calif. Dept. Agr.*, 41: 65-74.
- KEIFER H.H., 1955 - Eriophyid mites-notes and new species. *Pan. Pacific Entomol.*, 31: 109-116.
- KEIFER H.H., 1963 - Eriophyid studies. B-10, Calif. Dept. Agric., 1-20.
- NEWKIRK R.A. & H.H. KEIFER, 1975 - Synoptic keys to groups and genera. Eriophyoidea. In: JEPPE-SON L.R., H.H. KEIFER and E. W. BAKER. Mites injurious to economic plants. Univ. Calif. Press: 562-587.