

FERDINANDO BIN

*Istituto di Entomologia - Facoltà di Agraria
Università Cattolica del Sacro Cuore - Piacenza*

RECORD OF A TERATOLOGICAL *TRICHOPRIA* ASHM.
(HYMENOPTERA, DIAPRIIDAE)

SUMMARY. - A male of *Trichopria* Ashm. (Hym., Proctotrupoidea, Diapriidae) exhibits some teratological characters confined to the head: atrophy of the left side with lack of relative antenna, compound eye and mandible; one ocellus missing; ocelli, right compound eye and mandible unusually big.

The other teratological Proctotrupoids are briefly reviewed.

The teratology in *Hymenoptera* has been reviewed by BALAZUC in 1958 and until then not a single case in *Proctotrupoidea* in the category of monstrosities was recorded; from the gynandromorphic point of view a few cases were known and recently reviewed by BIN (1972).

The rarity of this phenomenon has been confirmed also by PAETZOLD and VATER (1968) and PAETZOLD (1971); in *Ceraphronidae* they could not find any teratological individual of *Lygocerus* Foerster in spite of the great number of specimens examined.

In the other families of *Proctotrupoidea* there are only three cases of anomaly, two in *Scelionidae* and one in *Diapriidae*.

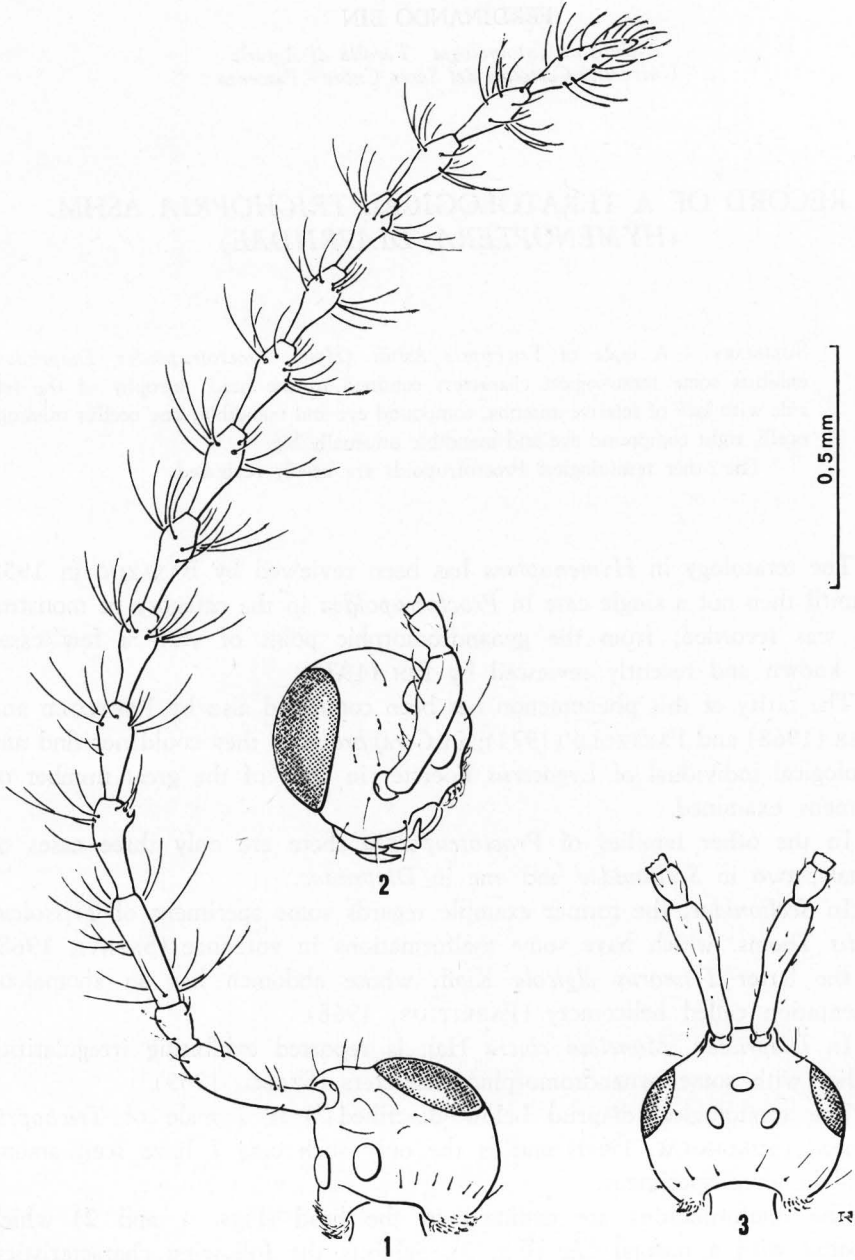
In *Scelionidae*, the former example regards some specimens of *Trissolcus grandis* Thoms. which have some malformations in antennae (SAFAVI, 1968) and the latter *Trimorus algicola* Kieff. whose abdomen has an anomalous segmentation called helicomery (FABRITIUS, 1968).

In *Diapriidae*, *Monelata cincta* Hal. is reported exhibiting irregularities together with some gynandromorphic characters (SZABÓ, 1959).

The teratological diapriid below described⁽¹⁾ is a male of *Trichopria* Ashmead (SUNDHOLM, 1960) and is the only such case I have seen among several hundred specimens.

The malformations are confined to the head (Figs. 1 and 2) which compared with a normal one (Fig. 3), exhibits the following characteristics.

(1) Collected in Northern Italy (Piacenza, Passo Penice, 27-VIII-1972, natural prairies, 1.300 m a.s.l., suction machine, leg. BIN) and preserved in my collection.



Figs. 1-3 - *Trichopria* sp., ♂. Head exhibiting teratological characters (1 and 2) compared with a normal one (3).

The head is strongly asymmetrical with the right side more developed than the left one; the latter is atrophic and the cuticle of the cheek is rough instead of smooth with hairiness normally present only behind cheeks and temples.

Only one antenna is present, inserted almost medially but normal with regard to development and segmentation.

The only compound eye is placed almost frontally, it is much bigger than a normal one but it does not have the dimensions and the position of a cycloptic eye⁽²⁾.

The ocelli are two instead of three and their diameter is almost double compared with a normal one; the former is placed on the vertex and the latter between the temple and the cheek of the left side.

About the mouth parts, the right mandible is unusually big while the left one is atrophic; maxillary and labial palpi seem to be normal.

There are no traces of the other antenna and compound eye; concerning the third ocellus it is hard to say which one is missing, probably the median one.

As mentioned above, the thorax, its appendages and abdomen do not exhibit any irregularity.

RIASSUNTO

UN CASO DI TERATOLOGIA IN *Trichopria* ASHM. (Hymenoptera, Diapriidae)

È descritto un caso di teratologia riscontrato in un maschio di *Trichopria* Ashm. Tale individuo presenta atrofia della parte sinistra del capo con mancanza dell'antenna, dell'occhio composto, di un ocello e della mandibola di quel lato. Gli altri due ocelli, l'occhio composto e la mandibola di destra sono insolitamente sviluppati.

Si fa breve cenno ad altri casi di teratologia osservati nei Proctotrupoidei.

REFERENCES

- BALAZUC J., 1958 - La tératologie des Hyménoptéroïdes. *Annls Soc. ent. Fr.*, 127: 167-203.
BIN F., 1972 - Un nuovo caso di ginandromorfismo in *Ashmeadopria* Kieffer (Hymenoptera, Proctotrupoidea, Diapriidae). *Entomologica*, 8: 55-59.
FABRITIUS K., 1968 - Eine anomalie des abdomens bei der gattung *Trimorus* (Hym., Scelio-
nidae). *Anal. stiint. Univ. Al. I. Cuza*, 14: 1-2.
PAETZOLD D. and VATER G., 1968 - Zur Teratologie der Primaer- und Hyperparasiten von *Brevicoryne brassicae* (L.). *Dt. ent. Z., N. F.*, 15: 409-426

⁽²⁾ A remarkable example of cycloptic eye is that illustrated in the *Chalcidoidea Pteromalidae Pachyneuron aphidis* (Bouché) by PAETZOLD and VATER (1968).

- PAETZOLD D., 1971 - Studien zur Teratologie Parasitischer Hymenopteren. *Int. Congr. Ent.*, 13th, 1: 277-278.
- SAFAVI M., 1968 - Etude biologique et écologique des Hyménoptères parasites des oeufs des punaises des céréales. *Entomophaga*, 13-5: 381-495.
- SUNDHOLM A., 1960 - On *Diapria* Latreille and allied genera (Hym., Diapriidae). *Opusc. Ent.*, 25-3: 215-223.
- SZABÒ J. B., 1959 - Notes on a gynandromorph Diapriid wasp from Hungary (Hym. Proct. Diapr.). *Folia ent. hung.* (S. N.), 12-33: 495-496.